



**NOVI**  
DESIGNS & FINISHING  
NEW CREATIVITY REVOLVING AROUND YOU

**CATALOG**





# NEW CREATIVITY REVOLVING AROUND YOU

*Novi has devoted itself to being a benchmark of quality. It took us years of dedication, passion, and an eye for perfection to craft a unique path towards mastery*

*we aim to continue to shine upon the crystal industry by reaching new heights of excellence , guided by visionary management*

*Ahmed Mohsen*  
CEO & MANAGING DIRECTOR

**01**

*SHOPS & STORES*

**02**

*RESTAURANTS*

**03**

*LODGING  
FACILITIES*

COMM



# W ER CIAL

04

OFFICE  
BUILDING

05

MEDICAL  
FACILITIES

06

ATHLETIC  
STRUCTURES



# *SHOPS & STORS*

## **1** *SHOPS* *&STORES* **1**

When it comes to enticing shoppers off their screens and into brick-and-mortar locales, design details are paramount. From the streets of Tokyo, where minimalist store interiors house cutting-edge technology, to the tree-lined avenues of Paris, where Haussmann-style structures meet avant-garde expression, each retail locale offers a unique narrative of place. But the most innovative store designs go a step further, creating multi-faceted spaces to host events and community gatherings. As designers continue to push the boundaries of conventional retail store interior designs



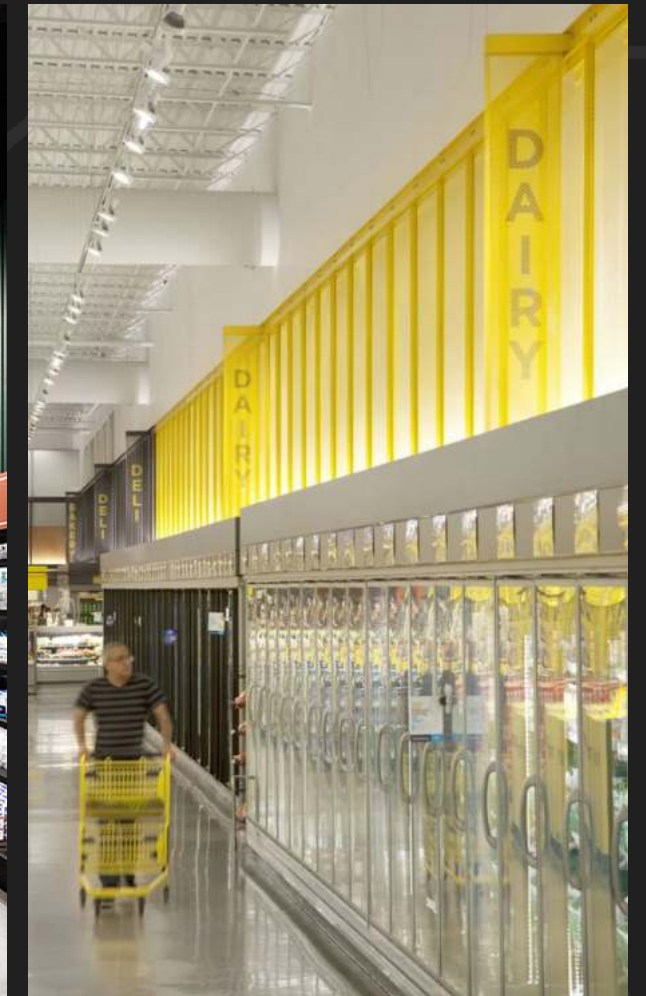




# SUPER MARKET

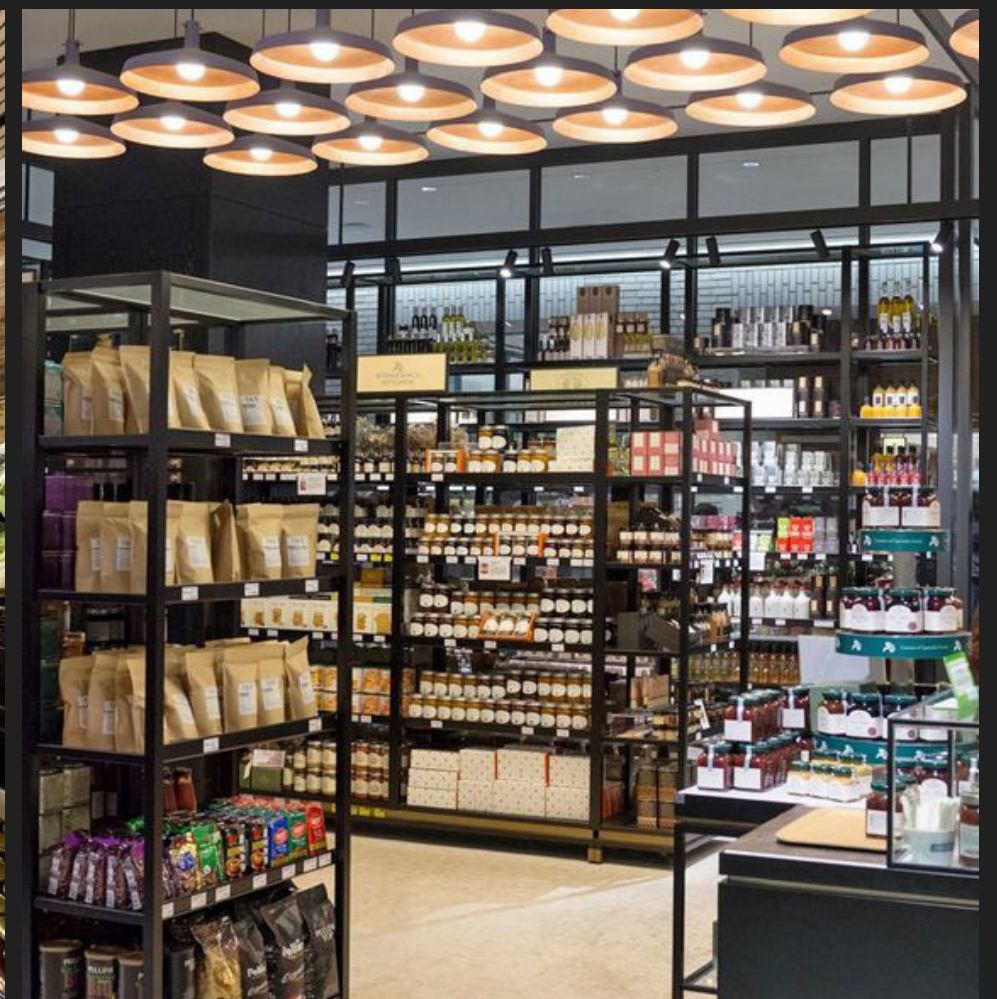








# SUPER MARKET









# SUPER MARKET

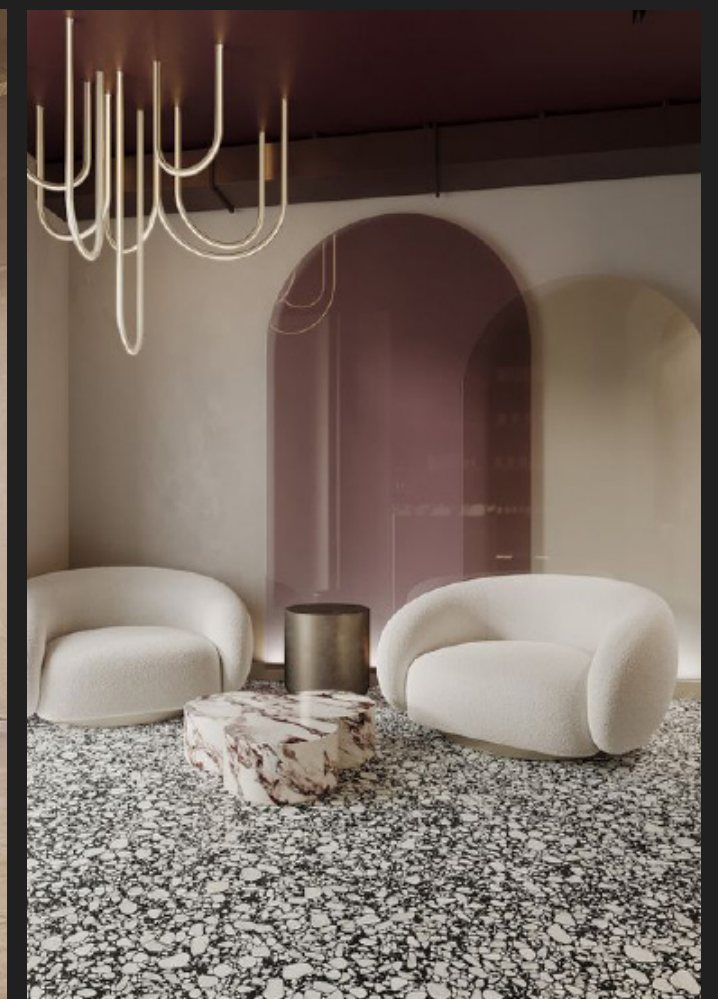








# BEAUTY CENTER









# BEAUTY CENTER

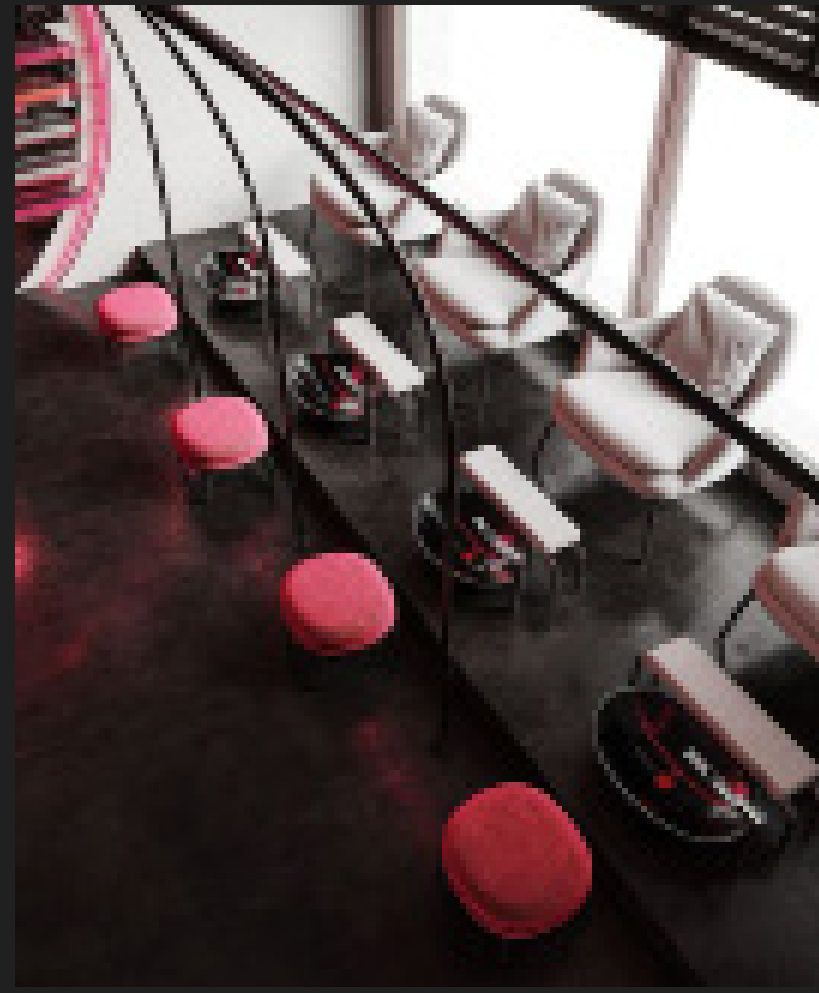
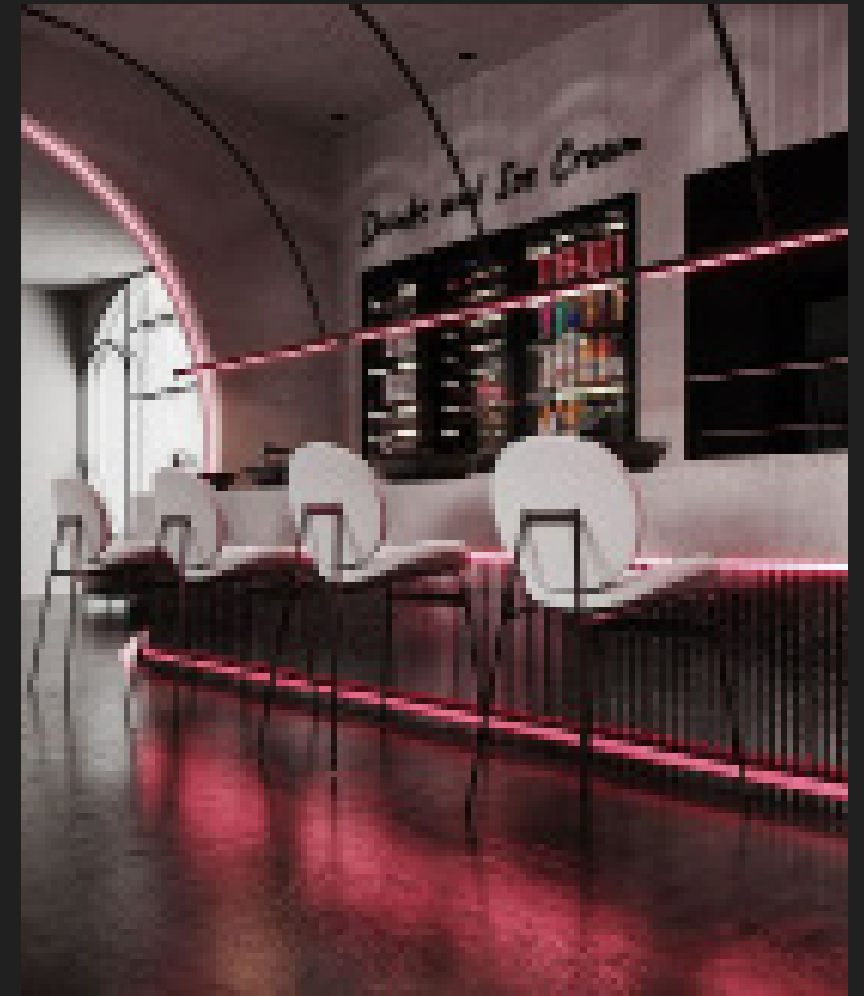
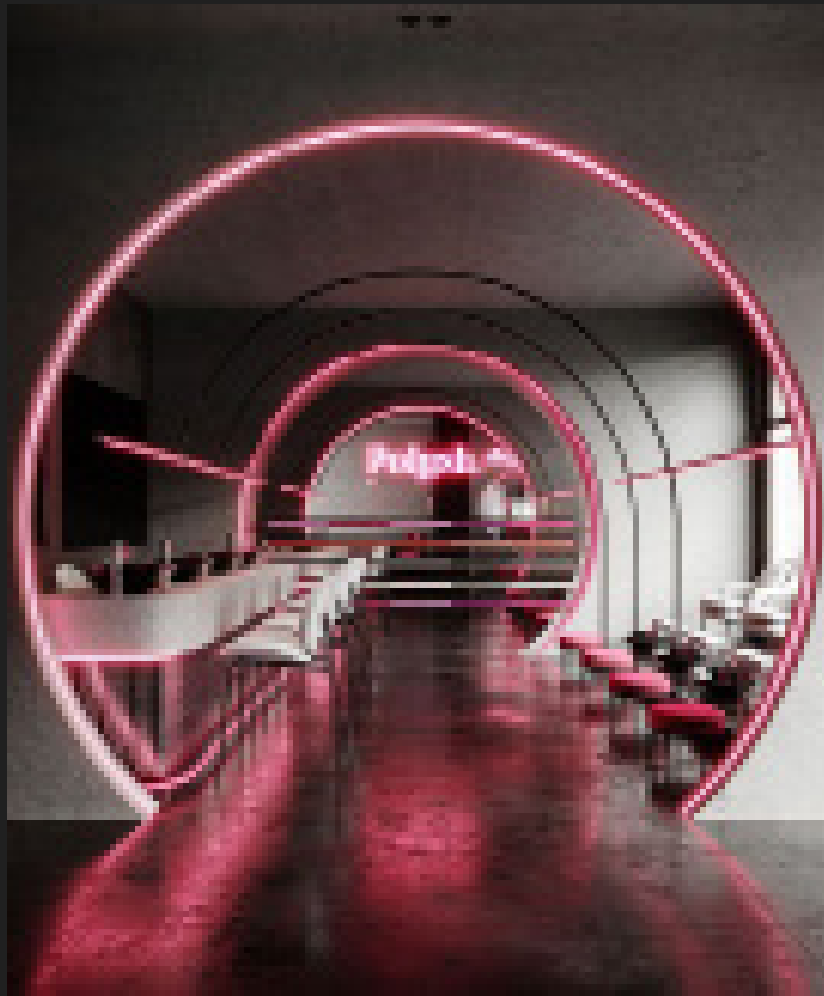




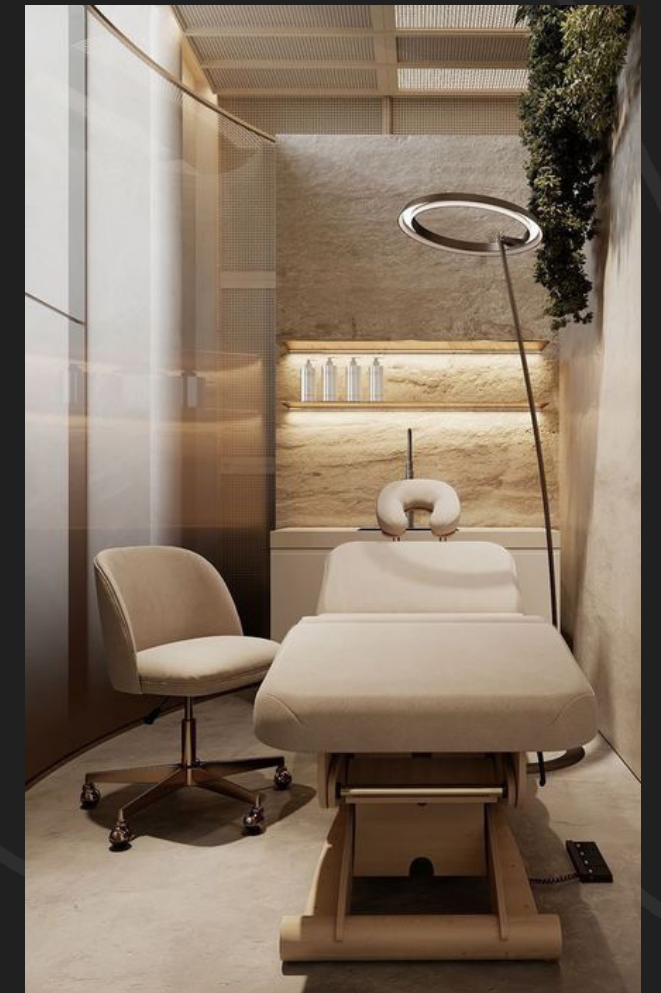




# BEAUTY CENTER









# CLOTHING SHOP









# RESTAURANTS





# ***RESTAURANTS***

When it comes to restaurant chains, conforming to the guidelines set out by the corporation is paramount to successful construction. For individual establishments, coming up with a unique or innovative approach can make a huge difference when it comes to customer comfort and employee versatility. One important difference in this type of project is understanding the local regulations that pertain to safety matters and other matters related to the kitchen area

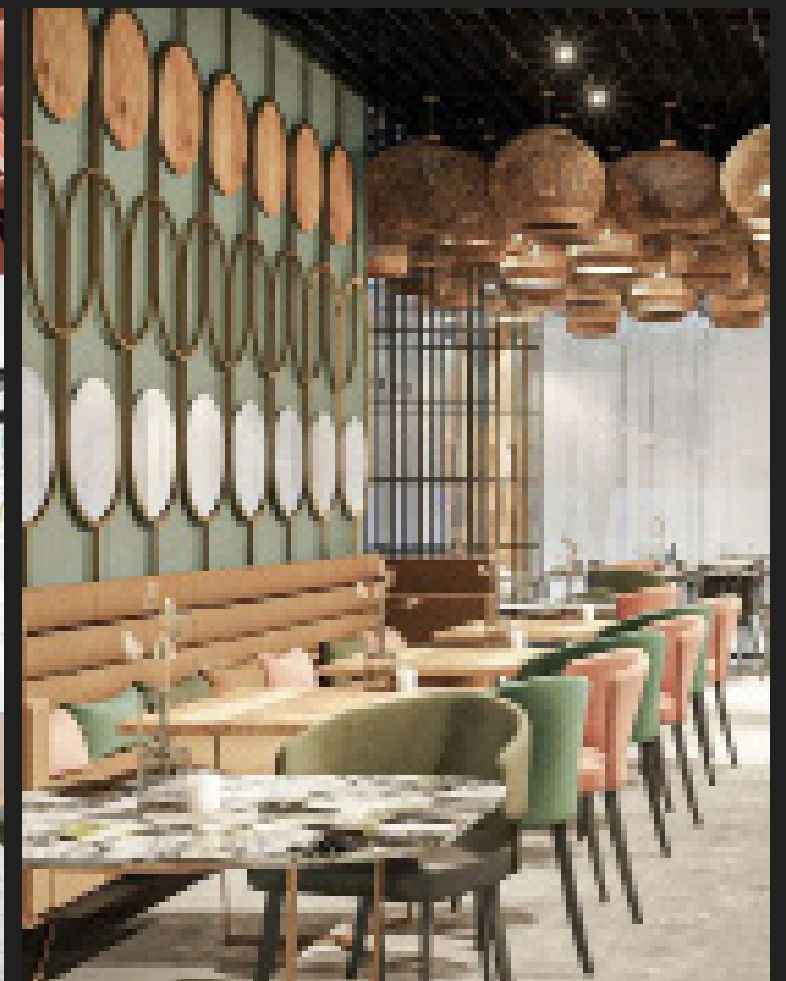




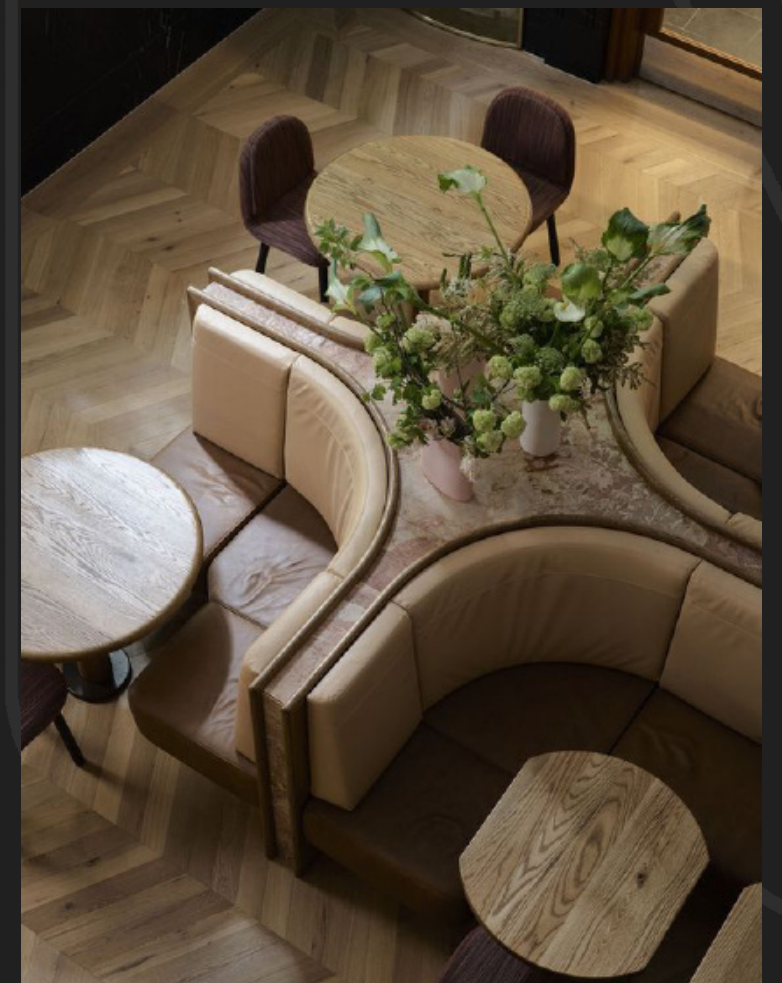




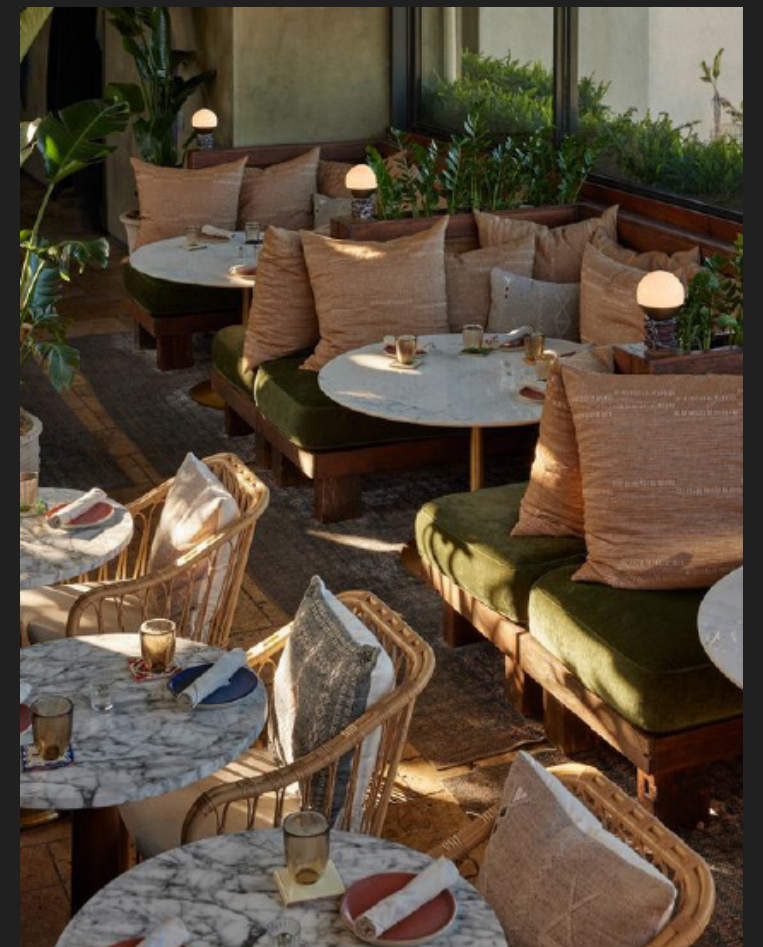


























# 2

## LODGING FACILITIES



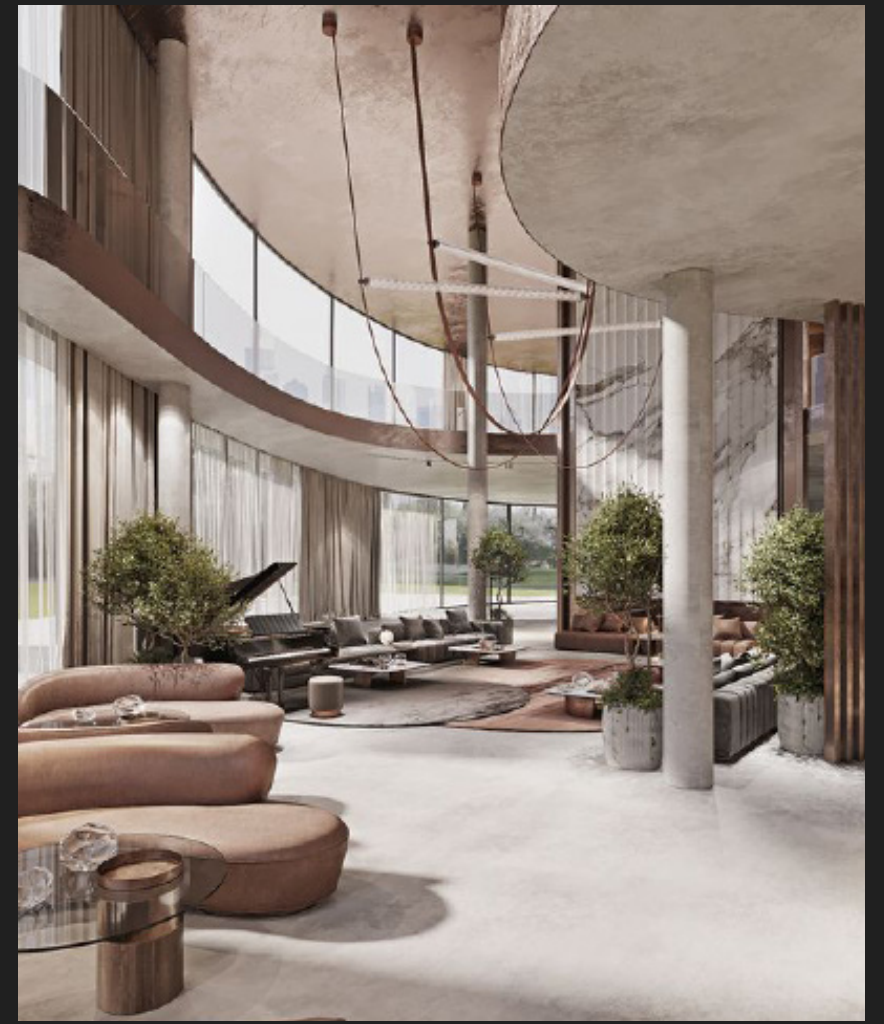
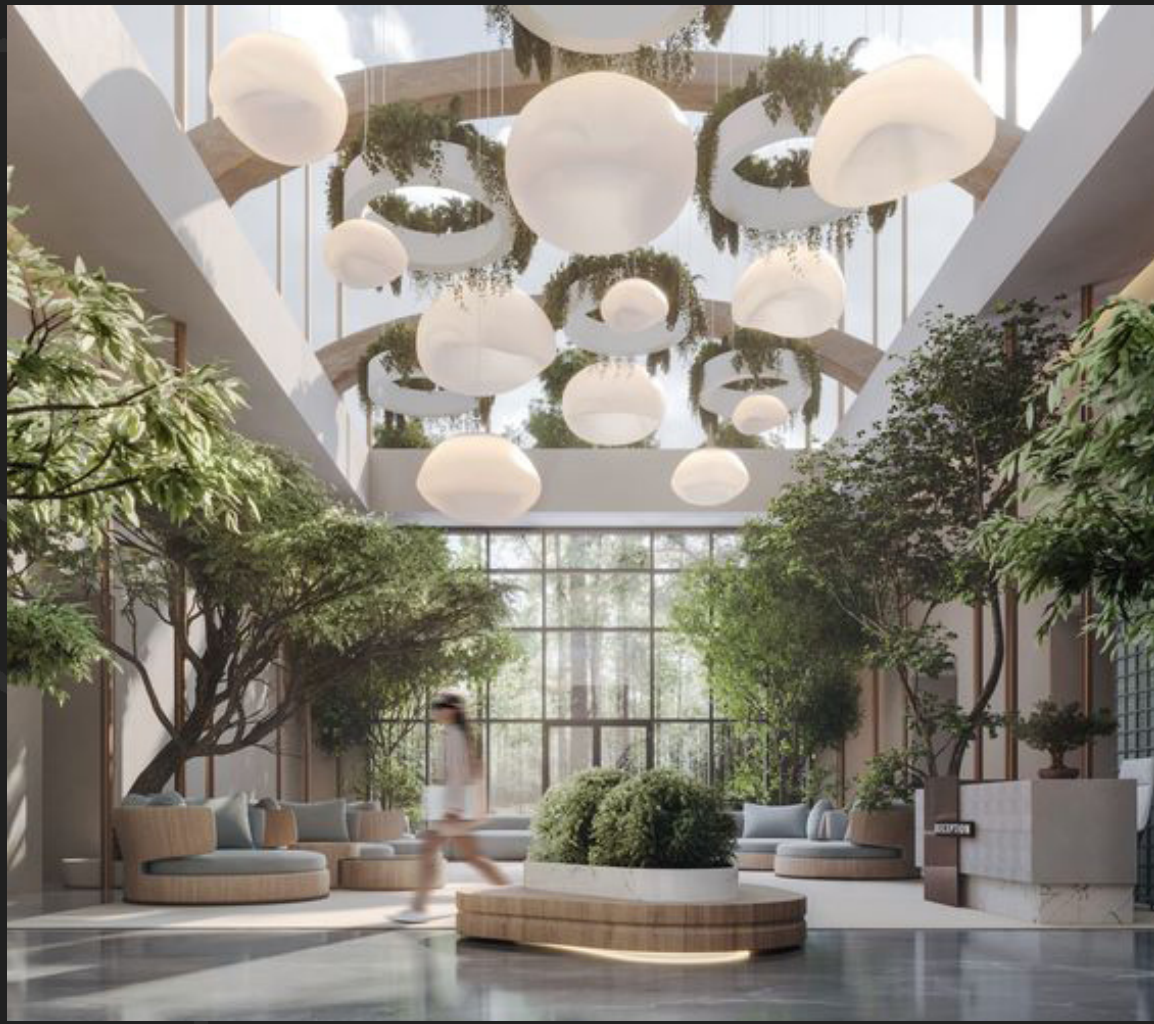




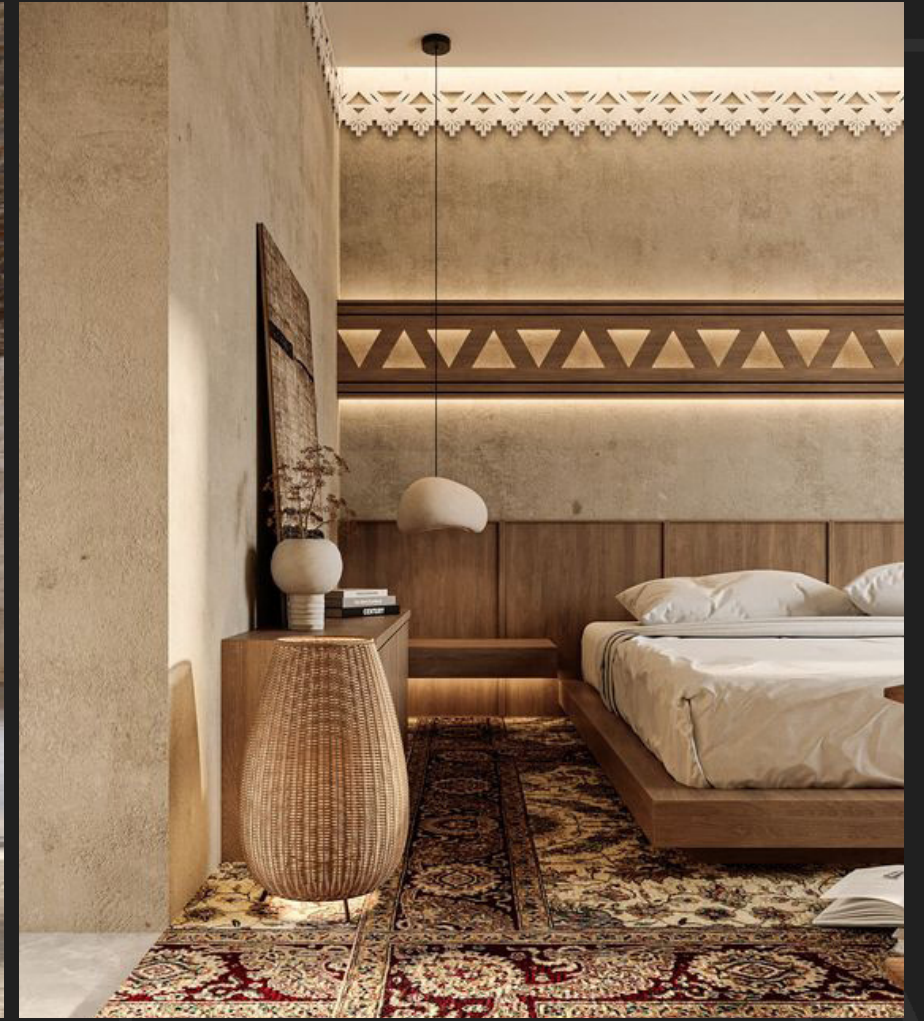
# LODGING FACILITIES

This largely focuses on the hotel and motel industry, which focus on issues like ease of access as well as the level of comfort and privacy for guests. Some motel construction projects can be very basic, while massive hotels demand an experienced hand during that particular commercial construction. Knowing that the ability to enjoy peace and quiet can be integral to repeat business, this type of build sometimes needs to juggle issues like sound-proofing with a background that .can offer experienced know-how









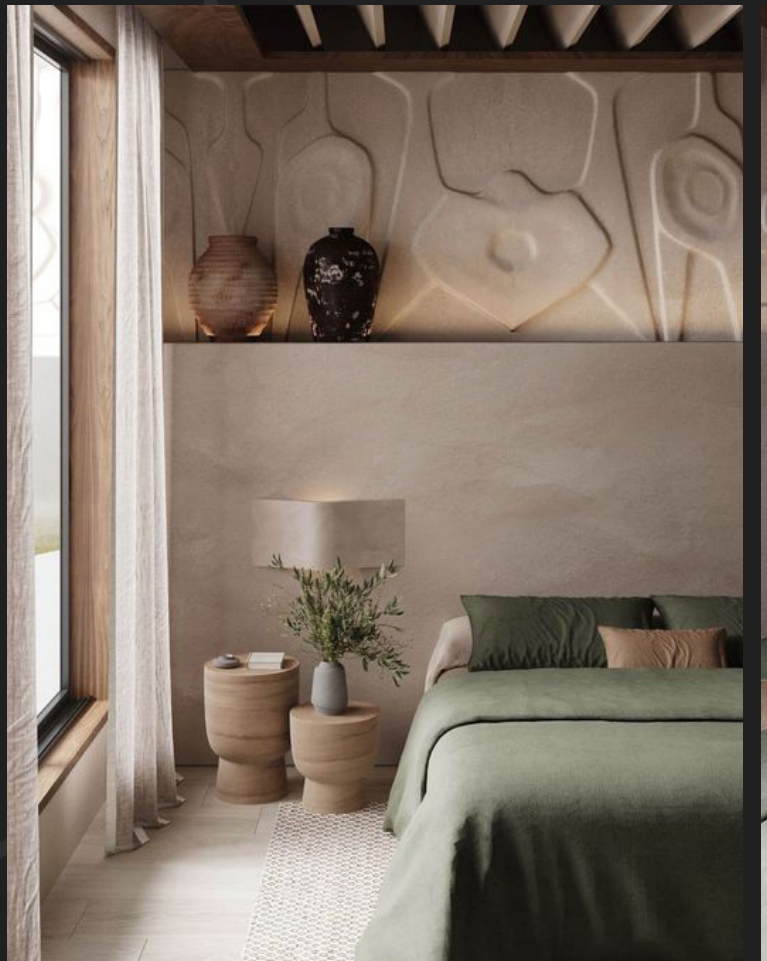




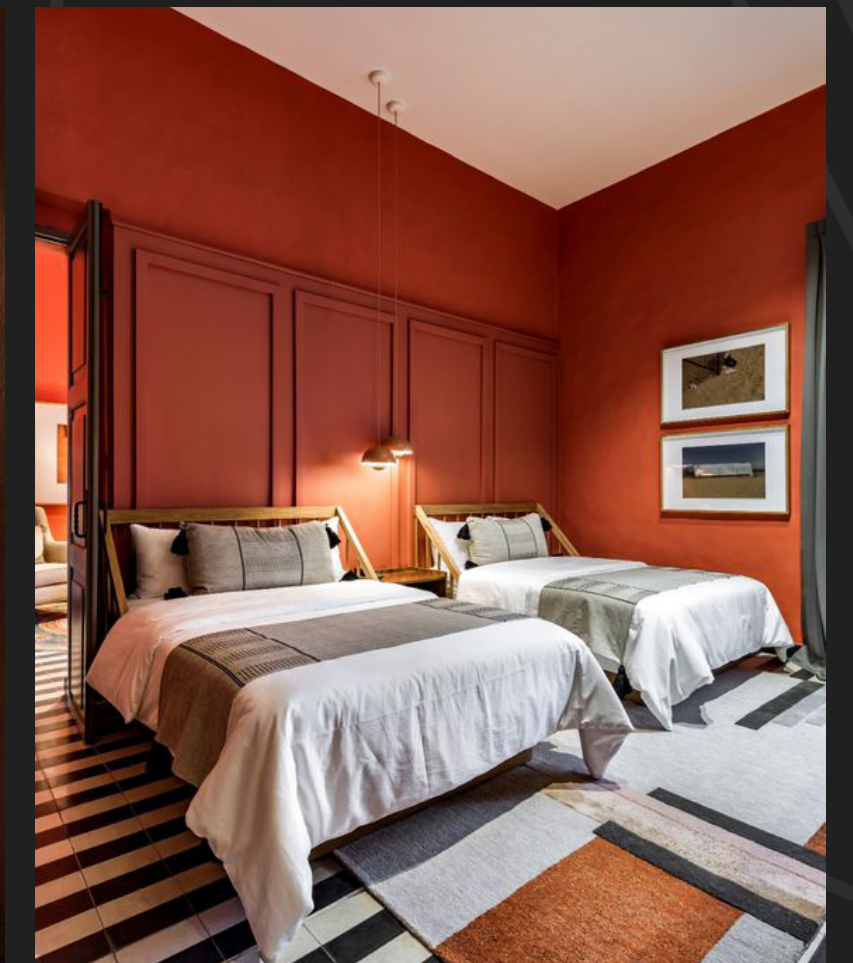
















The scope of these types of buildings can range from functional facilities for a small firm to skyscrapers for a major corporation. In the latter case, that can also include one that have blends multiple businesses within its vast framework. The type of business using this building could mean setting it up in a different fashion, as opposed to simply using a cookie-cutter approach. At the same time, construction necessities like bathrooms and fire escapes must address vital access concerns.



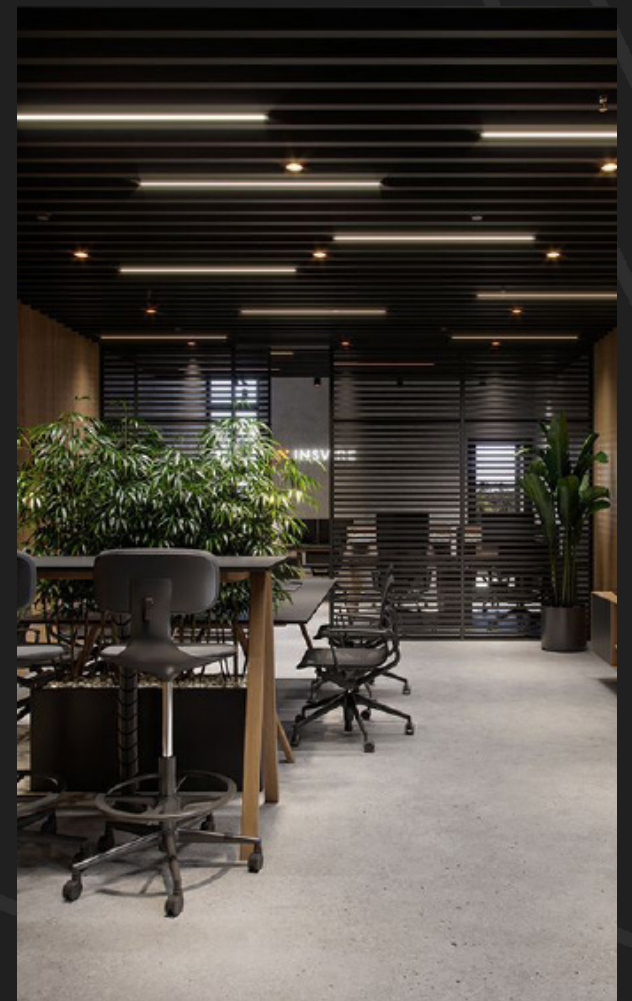
# OFFICE BUILDING











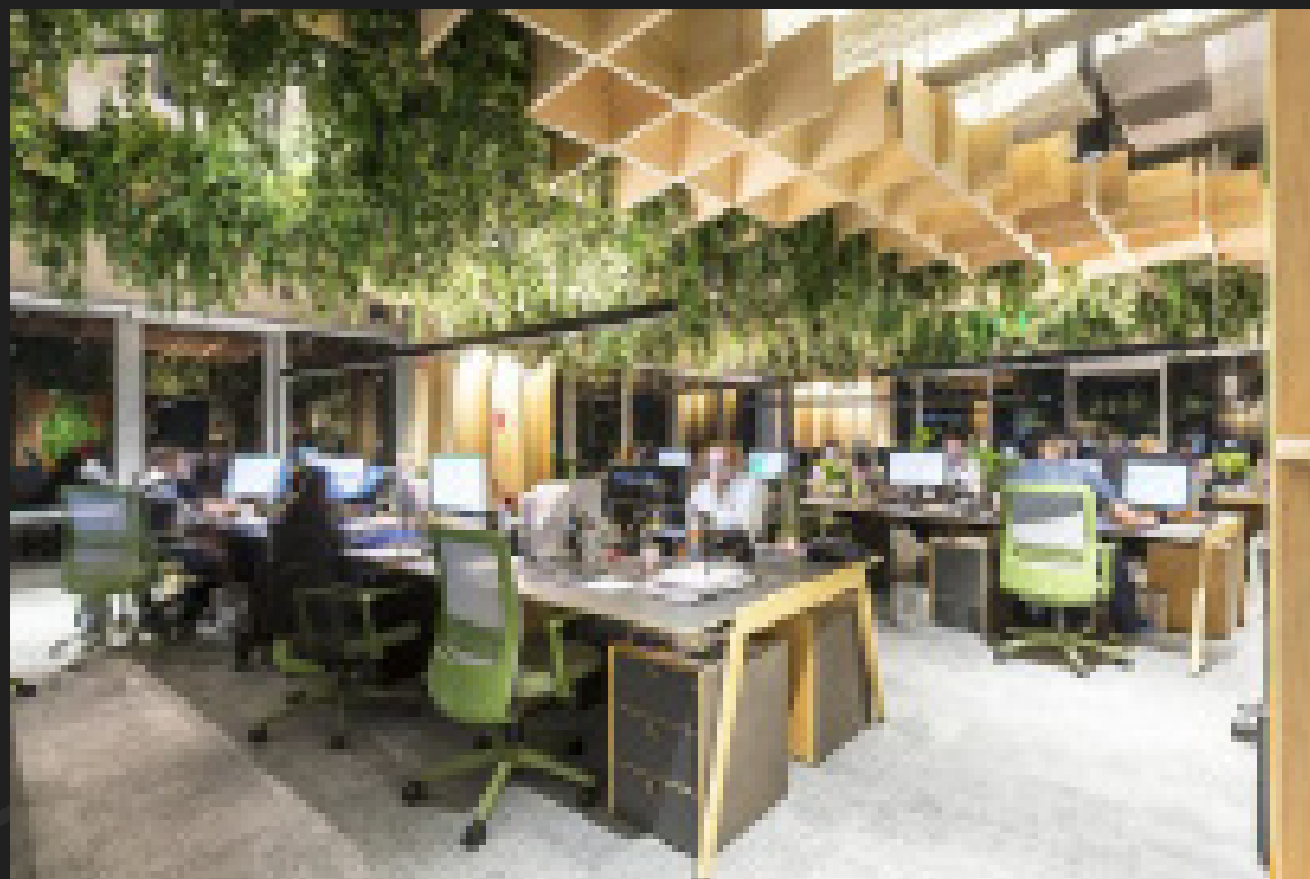




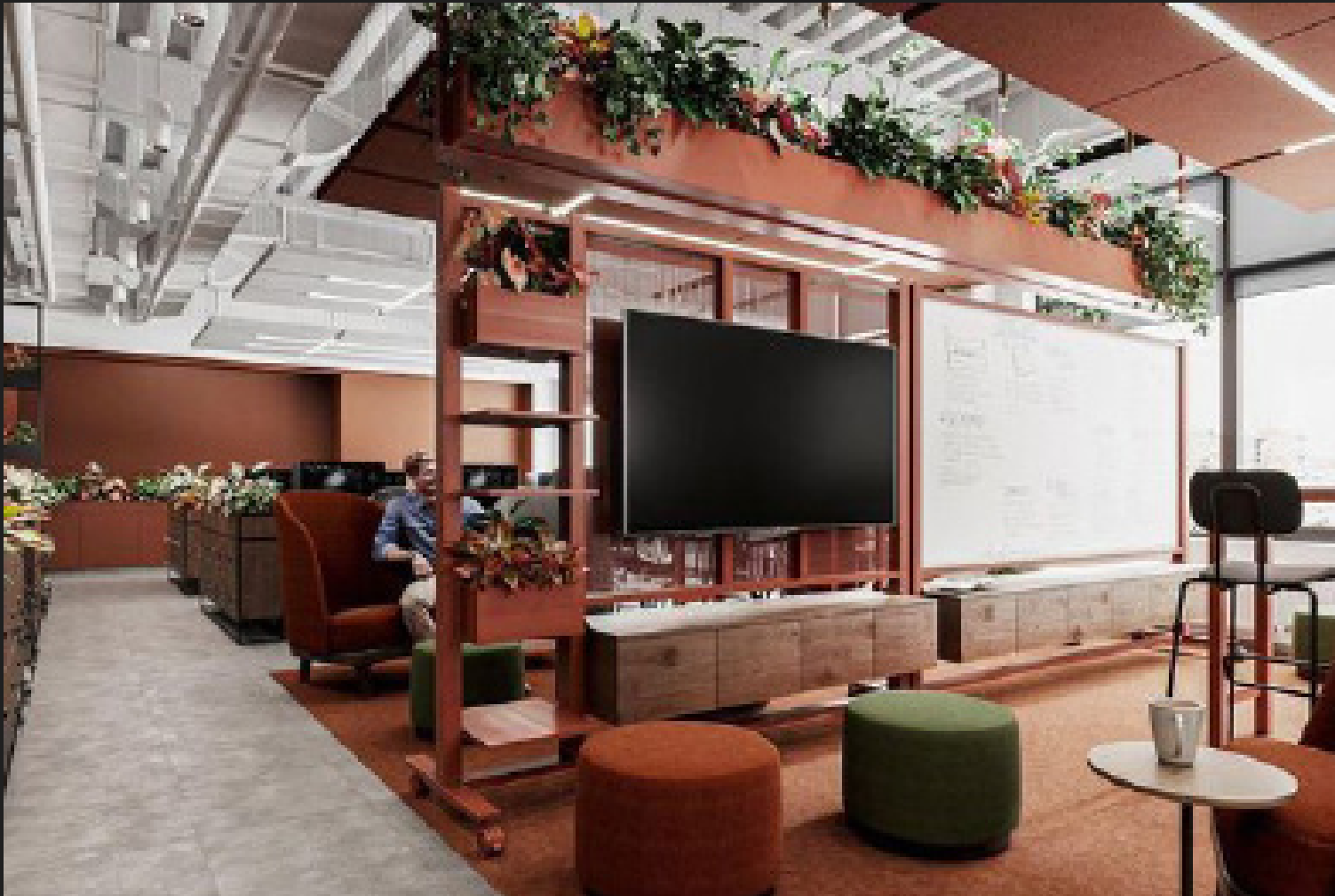
















# ***MEDICAL FACILITIES***

The need for places like hospitals will never fade, yet smaller clinics and buildings that deal with the pet population are also part of this equation. All of these areas need construction that factors in easy movement for personnel and patients while also making room for things like potentially life-saving equipment. Accessibility in this instance will need to be aware that all segments of society will likely be using the facility



# MEDICAL FACILITIES





# CLINICS









# CLINICS





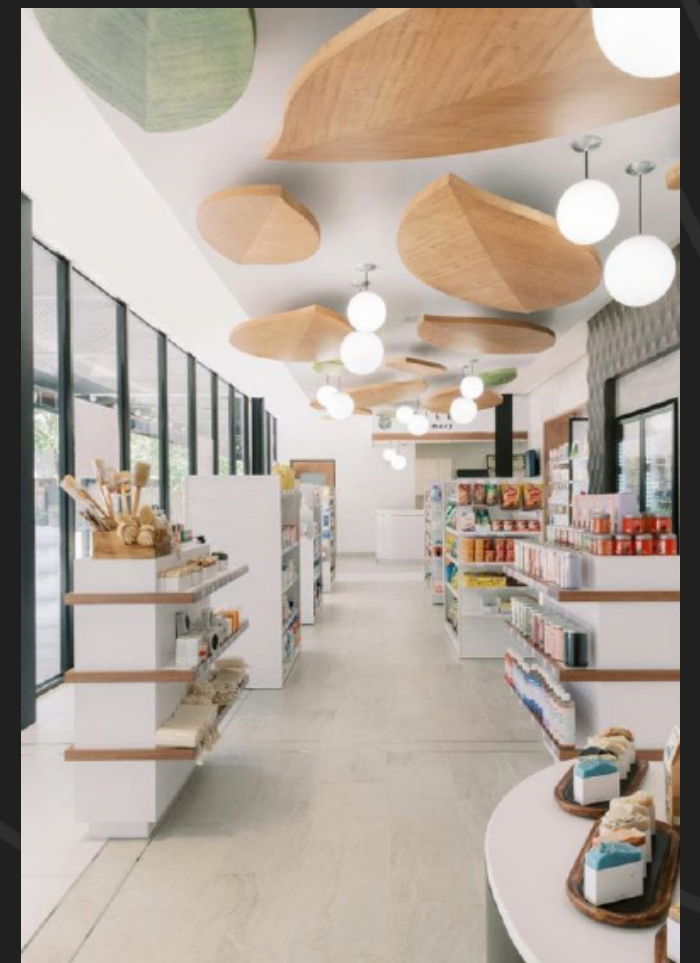
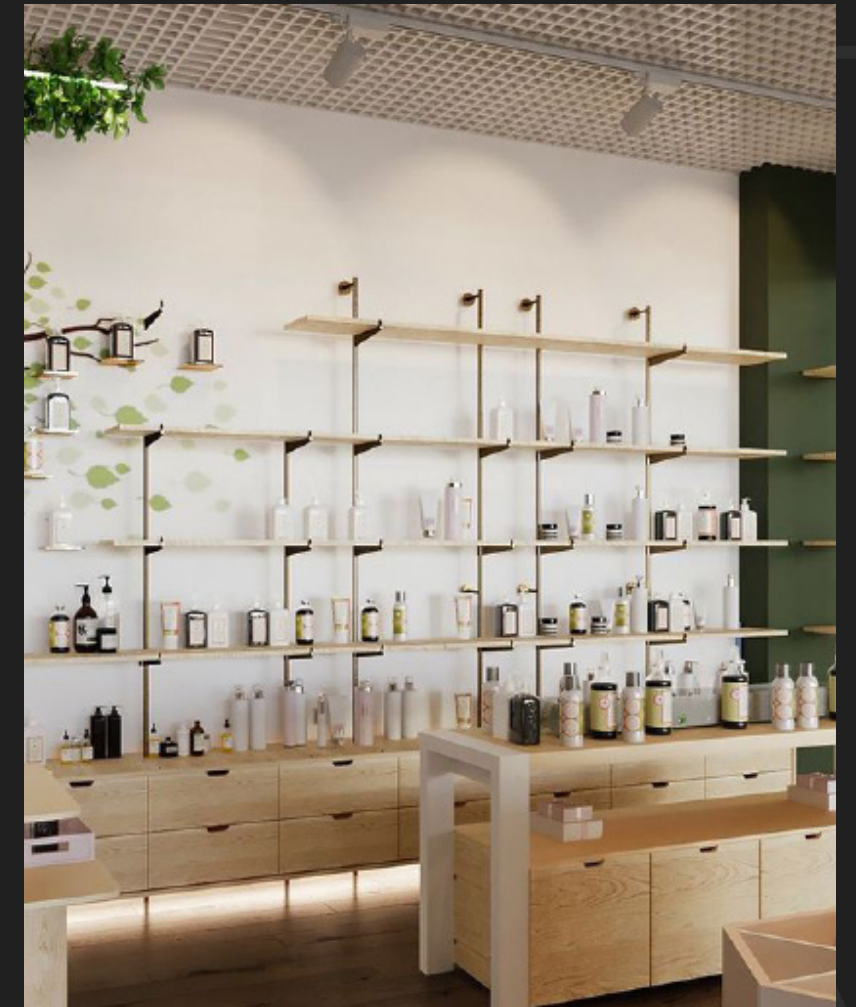




# PHARMACY

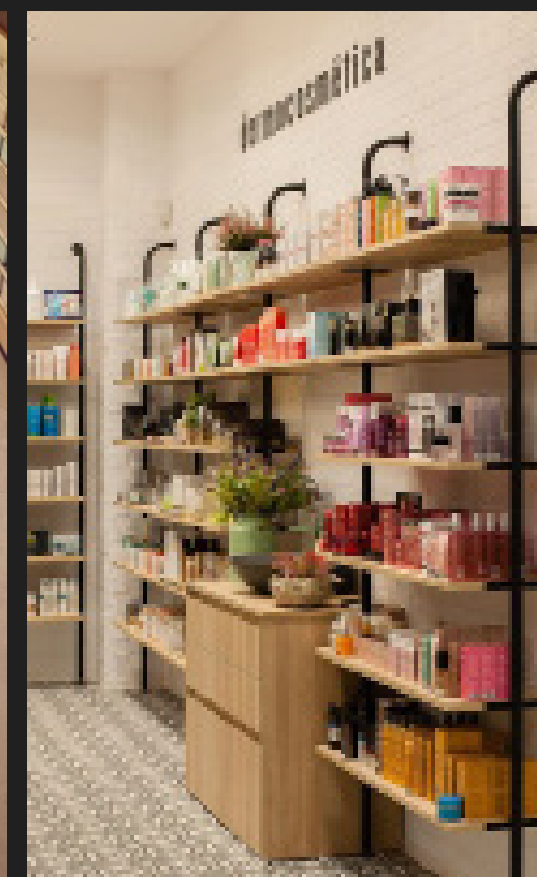
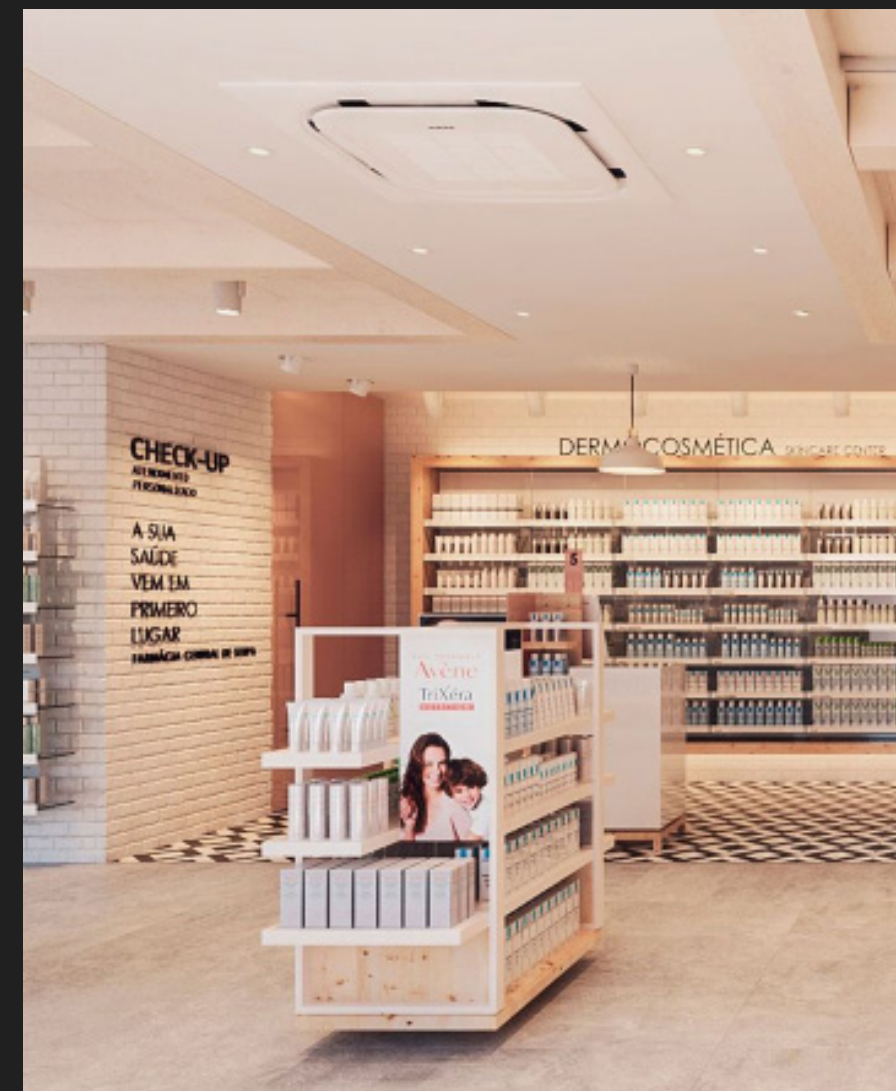




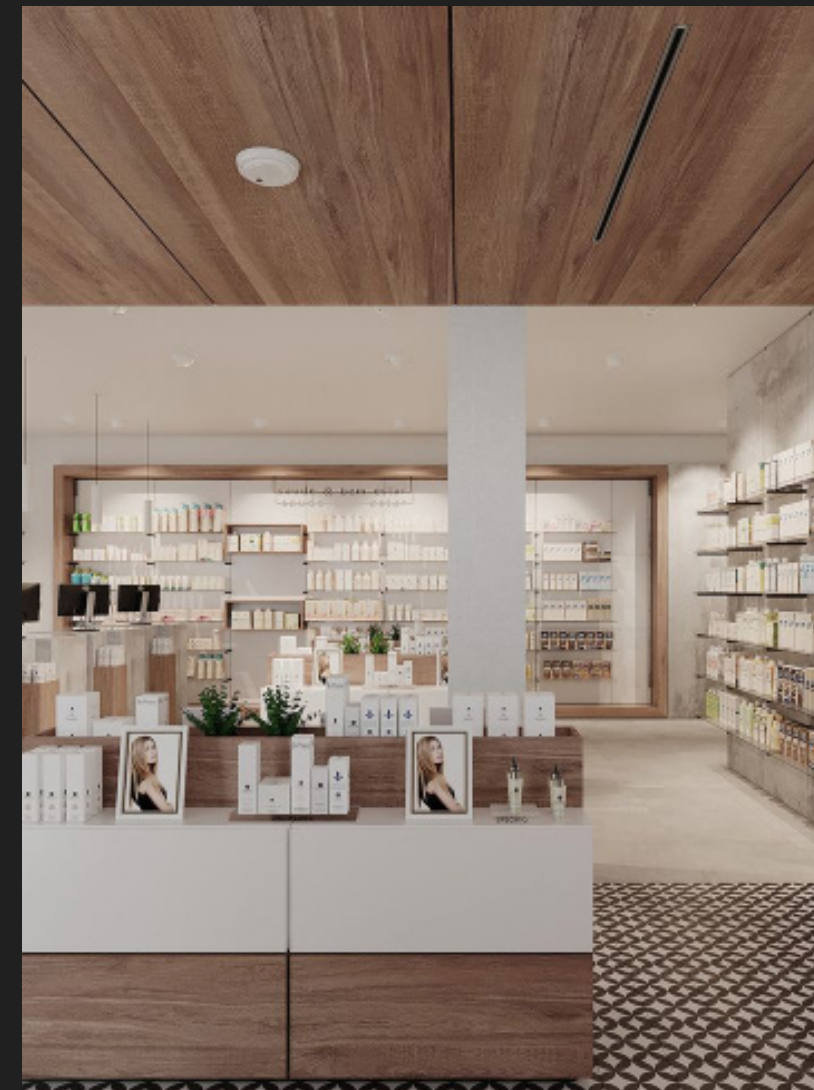




# PHARMACY











Massive stadiums are often the first thing that comes to mind when this is mentioned. However, smaller facilities for high schools, fitness centers and other playing areas can also be noted in the same breath. These structures often need to include aspects like bleachers or other pertinent items in the overall project, while also taking the need for visitor safety seriously



# ATHLETIC STRUCTURES



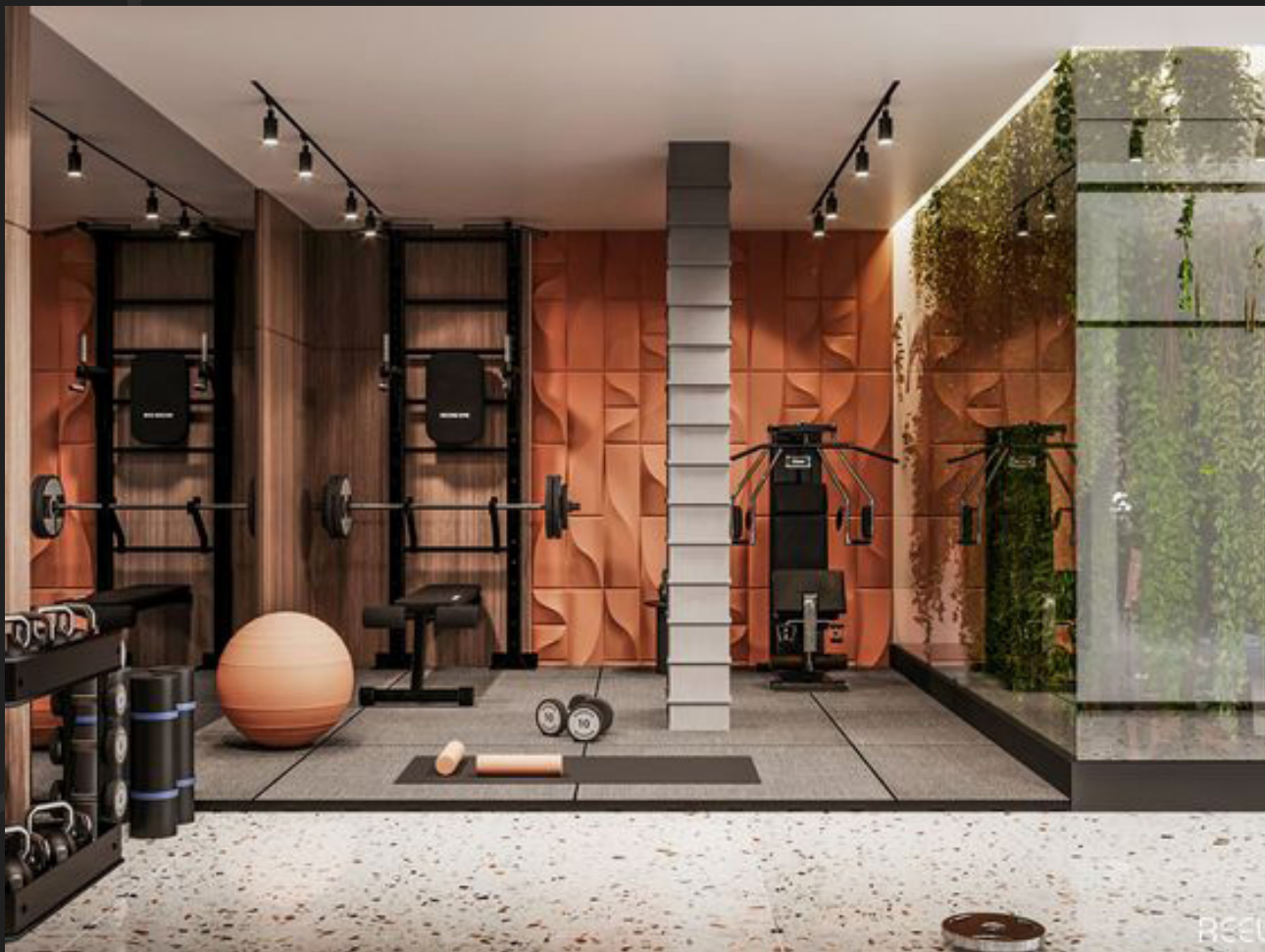




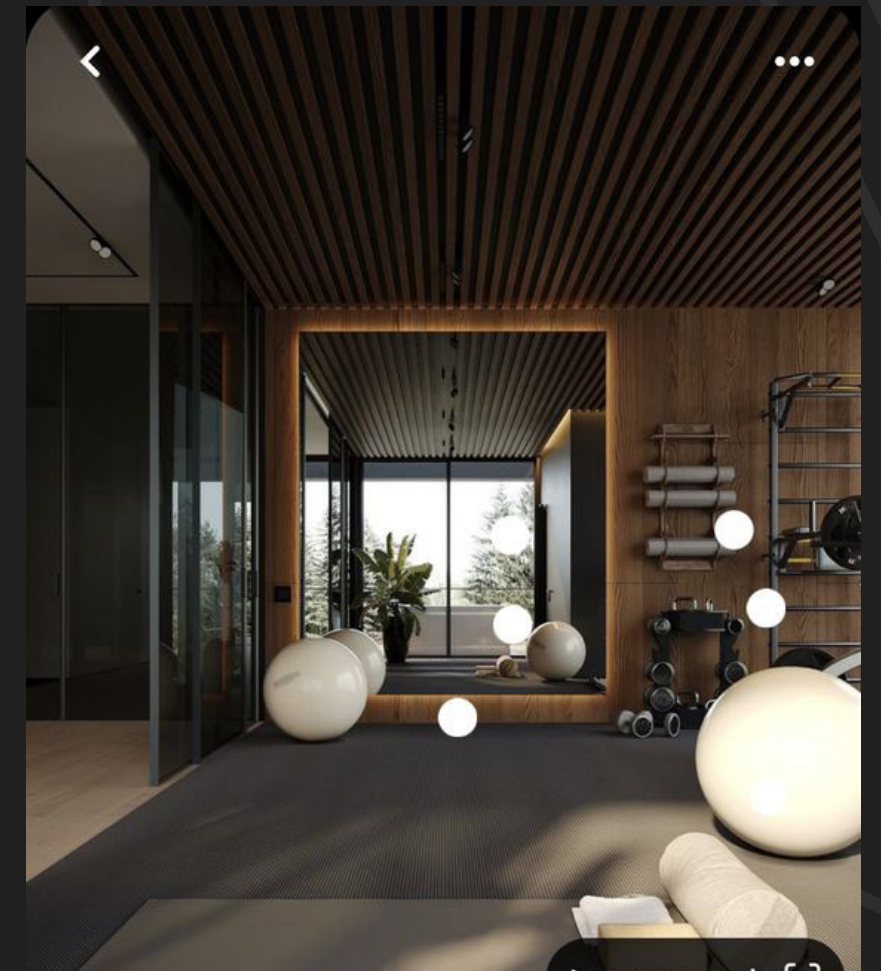
















[www.novi-df.com](http://www.novi-df.com)